



CHRIST THE REDEEMER
LUTHERAN CHURCH

CORNERSTONE

MAY 2021

"Leading People Into a Living Relationship With Jesus Christ."



A Letter From The Pastor

BY REV. SCOTT BURMEISTER

Fellow Redeemed,

"Like & Share" is a brand new tool that has come into vogue over the last year, during the Covid pandemic. It is a way for you to share the Gospel of Jesus Christ, by just using one finger. Churches across the globe were all forced to live stream their services, which turned out to be a huge blessing to everyone that was sheltering in place and trying to flatten the curve. The expansion of this new technology has created the condition for the possibility of something we have all struggled with: Evangelism! That's right, it is so easy now to do evangelism (that is to share your faith in a public way). All you have to do is go to your Facebook page, then click on the Christ the Redeemer Lutheran Church page and find Sunday's live stream. Now that you have it all brought up, its so simple, just touch the like button and then touch the share button. You did it! You just shared the Gospel of Jesus Christ with all of your friends on Facebook! How easy was that?

Who knew that you could reach as many people as Billy Graham did back in the day, with just the touch of your finger? When you like and share the worship service for CTR, you are spreading it through a network of people who probably need to hear that their sins are forgiven through Jesus Christ.

Jesus said, "All authority in heaven and on earth has been given to me, go therefore and make disciples of all nations, baptizing them in the name of the Father and of the Son and of the Holy Spirit, and teaching them to obey everything I have commanded you. And surely I am with you always, to the very end of the age." Technology and CTR's ability to live stream have made it so simple for you to carry out this great commission of our Lord. All you need is one finger that can like and share our church's live stream.

Amen.

Rev. Scott Burmeister
Pastor

Suzanne Watt
Dir. of Christian Education

Deva Beebe
Business Administrator

Jacob Drengler
Music Director

Craig Amendt
Assistant Music Director

Floyd Lemons
Property Manager

Sunday Worship:
8:15 & 10:45 AM
Sunday School/Bible Classes
9:30 AM

PHONE: 918/492-6451
Web: www.ctrtulsa.org
Email:
christredeemer@ctrtulsa.org



Outreach News

Join a Czech Republic Bible Study or Worship Service!

Our missionaries, Rev. Dale and Suzanne Kaster in Prague, Czech Republic, have invited you to attend via the internet their Bible study and worship service! Rev. Kaster, "One good thing that has come about because of the pandemic is an online Bible study. We are still few in numbers. But we also have a very devoted group. If you would like to join us, simply go to our Facebook group and join. Then, go to "Rooms," and join the Bible study. We meet on Thursdays at 7:30 p.m. local/12:30 p.m. Central Standard Time. The class is taught in English, so you will have no problem participating. (You will have to use a browser other than Firefox, because it does not support this function)." "You can find the video of our worship service led from home due to the pandemic restrictions in the Czech Republic on our Facebook group's page. We start at 11:00 a.m. our time (which means 4:00 a.m. CST.) But when it is over, the video remains. You are always welcome! We pray you all stay well and commend you to the care of Christ." Rev. Dale Kaster

CTR sends funds to support the Kastors in the Czech Republic and Anton Lutz in Papua New Guinea. Please pray for their ministries and those they serve.

South Tulsa Community House Thank You!

For the members of CTR from Lisa at STCH. "Thanks to Christ the Redeemer, we were saving up the laundry soap you had been donating to give to our seniors. We were able to have enough to distribute last Friday. The seniors were shocked and excited about the present. I had one senior almost cry when she told me, she hadn't been able to do any laundry for the last few weeks because she was scared to go to the grocery store since she had been sick for a while. We were able to give her enough food, hygiene items and the laundry detergent so she didn't have to go to the grocery store for a little while longer. Our seniors are so vulnerable and every little thing we can do for them makes our hearts swell--but of course we can't do it without your help. Thanks!"

Current wish list from STCH. Please put items in the grocery cart in the south hallway. Thank you!

Laundry detergent, bar soap, shampoo, coffee, all-purpose cleaner, dish soap, men's razors.

Second Quarter Sunday School Offering Recipient

Your Sunday School offerings during April, May and June will be sent to Lutheran Braille Workers for their "Driving the Gospel Home" campaign to purchase a new work van:

Have you ever tried to carry 20,000 pages of paper at a time? How long would it take you to manually carry 250 boxes of books between a warehouse, post office, or church? Have you ever thought how a work van can be used to carry and share the Gospel message?

For over 20 years, LBW's workhorse van has transported hundreds of pounds of paper, cardboard boxes, and books between our warehouse, local Ministry Production Centers, and the Post Office. This machine has transported thousands of volumes of the Bible and other Christian materials but is nearing

the end of its life cycle. In the past month, this van has begun to break down more often, costing our ministry quite a bit in expenses to keep it running.



Current Van

Think for a second how many thousands of people throughout the world have benefitted from the hard work this vehicle has performed for the past two decades.

Your support of this new van is ultimately helping to support the Spread of the Gospel. Please make your gift today so the production and distribution of the Bible will continue without interruption or slow down!

Production will soon start up again at Our Savior Lutheran Church on Braille materials as pandemic restrictions are lessened. You can help by volunteering to work with a group from CTR which meets the second Monday of each month at 9 am until around noon, producing books of the Bible in Braille. Please consider joining this group of "friendly, laid-back" volunteers from CTR and King of Kings, Glenpool, as we joyfully put the Word of God in Braille and see it sent to over 41 different countries! Contact Teresa Nightingale for more information! www.lbwloveworks.org

Patti Ross, Outreach Ministry



Brad Jackson & Michelle Na'ayem	May 2	16 yrs
Robert & Johana Fitzgerald	May 5	20 yrs
Rhoda & Charlie Transue	May 6	20 yrs
Jerry & Diane Morlock	May 9	51 yrs
Mark & Sherry Volberding	May 11	9 yrs
Bill & Ladon Bullock	May 17	51 yrs
Barry & Daphnee Brian	May 20	45 yrs
Kevin & Sarah Drain	May 24	9 yrs
Russell & Carole Hansen	May 26	54 yrs
David & Teresa Nightingale	May 26	48 yrs
Frank & Connie Thomas	May 29	39 yrs
Eric & Kara Kaplinski	May 31	13 yrs
Scott & Julee Mabrey	May 31	24 yrs



Congregational President's Update



April 15, 2021

Dear fellow members,

What a difference a year makes. Wasn't it wonderful to celebrate Easter in a more normal fashion and now that I think about it, to be able to celebrate Easter in person at all. A year ago, we weren't even able to conduct in person Easter services. Thanks be to God!

Construction Status News:

The roof over the new area is all but complete, the 2nd floor will have the sheet rock completely installed by the end of this week, the exterior stucco installation process has begun, the initial work for the installation of the elevator will begin in the next couple of weeks. The windows should be installed by the end of this month. There are so many details that must be worked out each and every day. I am so thankful for the builder and superintendent that we have along with all the dedicated sub-contractors that are seeing to it that we end up with a quality project. Thanks to the building committee that laid the groundwork of putting the design together with our architect. I have been taking small groups through the new building on Sunday mornings after early service so if you are interested let me know and I'll be happy to take you. Floyd Lemons has also taken people through as well. We think it is important for members to see the project up close.

Budget:

We continue to receive great budget news as our financials through the end of March are completed and it shows our offerings were \$41,000 more than budgeted through the first three months of 2021. Expenses are \$49,000 below budget. Overall offerings exceeded expenses by \$91,000 at end of March. Our congregation is so blessed.

Planning is beginning for our opening of the phase 1 facility this summer. Our agenda for the May voters meeting is being put together. Stay tuned for developments.

Respectfully,
Brad Young
President



We have resumed in-person worship at 8:15 and 10:45. Children's, Youth and Pastor's adult Sunday school class have resumed as well. We WILL continue to livestream the 8:15 service and Pastor's adult Sunday school class.

With the expiration of the Tulsa city mask ordinance on April 30 we will return to our regular communion practice around the rail at the altar.

Pastor B will continue to do communion appointments on Thursdays. To schedule a time, please call the Church Office.

CTR BOARD MEMBERS



President: Brad Young

President-Elect:

John Meinders

Past President: Tom Kirby

Secretary: Connie Thomas

Treasurer: Jennie Gard

Director-at-Large:

Cheryl Davison

Director-at-Large: Kyle Stein

Director-at-Large:

John Campbell

Director-at-Large:

Sam Woodard

Personnel Committee:

Ed Fager

Communications:

James Morgan

ECC: Chris Carson

Education: Scott Chesher

Elders: Jim Holt

Evangelism: Steve Short

Family & Children: Katie

Michaels-Johnson

Finance: Brenda Flasch

Outreach: Patti Ross

Parish Life: Danita Cockrell

Property: Floyd Lemons

Stewardship: Nancy Kirby

Strategic Planning:

Tim Kuehnert

Worship: Cherry Volberding

Youth: Amber Carson

Endowment Fund: Rob Koch





MUSIC MINISTRY

CHOIR & HANDBELLS FOR YOUTH & ADULTS

BY JACOB DREGLER

The Lord is in his holy temple; let all the earth keep silence before him (Habakkuk 2:20).

Let all mortal flesh keep silence and with fear and trembling stand (Liturgy of St. James, LSB 621).

In many synagogues around the world, the ark containing the Torah scrolls is adorned with the words *Da Lifnei Mi Attah Omed*, which translates as “know before whom you stand.” Upon reading these words, one might naturally be reminded of Moses standing before the burning bush (Exodus 3:1-6), fully aware that he stood on holy ground. The verse from the prophet Habakkuk and the excerpt from the Eucharistic hymn *Let All Mortal Flesh Keep Silence* found above both speak to those who stand in the presence of God. Habakkuk and the hymn writer both enjoin the reader, hearer, or singer to be silent before the Almighty.

When we gather for worship how often do we truly consciously consider the fact that we stand on holy ground? Do we remember and ponder in intentional terms the nature of the One in whose presence we gather? How often do we contemplate what it means to stand before Him who set the stars in their courses and before whom the morning stars sang for joy? Do we allow space for His still, small voice to speak in our worship life together? Do we think about these things as we worship? Do we know before whom we stand?

Please understand that none of what I have written above is my way of suggesting that we need to alter the Lutheran liturgy to more closely resemble Quaker silence. Far from it! In many instances, the words of Scripture adjure us to praise God with our songs and our instruments. Consider, for instance, the words of Psalm 150:

“Praise the Lord! Praise God in his sanctuary; praise him in his mighty heavens! Praise him for his mighty deeds; praise him according to his excellent greatness! Praise him with trumpet sound; praise him with lute and harp! Praise him with tambourine and dance; praise him with strings and pipe! Praise him with sounding cymbals; praise him with loud clashing cymbals! Let everything that has breath praise the Lord! Praise the Lord!”

The words of the liturgy which we speak and sing together each week are a marvelous and edifying gift from God. The hymns which we join in singing are nothing less than the musical proclamation of the Gospel of Jesus Christ. I would not forgo any of these things in our corporate worship, for they are among the elements that bind us together as a family of believers gathered around Word and Sacrament. The fact remains, however, that amidst the songs and sermons of our assemblies there is room for stillness and simplicity.

During the period of corporate Confession and Absolution found in the Divine Service, there is a brief period of silence for personal reflection and self-assessment as we prepare to confess our sins. Following the Sermon, there is also a period of silence for reflection on God’s Word. Where else might it be appropriate to include brief moments of silence wherein God might speak? Perhaps the time of preparation prior to worship, rather than being a mere social event, could be a time of reflection on the prayers, scripture lessons, or hymns for the day. The front of the Lutheran Service Book includes a wealth of occasional prayers which are designed for just such brief moments of silence as a way of focusing and centering oneself in preparation for worship.

One of the musical concepts introduced to young musicians at an early stage in their musical training is the symbol of a rest. Rests in music denote a period, whether brief or extended, of silence, that is, the cessation of musical sound.

From my perspective as a music teacher, it is vitally important that students understand that while a rest may indicate silence, it does not denote mere empty space. Silence in musical contexts is always active, never passive. In the silence prior to the beginning of a piece, energy is gathering in preparation for the release that occurs when the music begins. For singers and musicians who play wind instruments, the time between sounds, often indicated by rests, is frequently an opportunity for an intake of breath before beginning a new musical phrase. For singers, rests may also function as an indication of where to place the final consonant of a word. In each of these cases, the silence is doing something. The silence created by rests is an intentional, integral, functional component of music.

Silence in music is never passive, nor should the silence in our worship be. Music exists in the rests as well as the notes of a piece; there is no silence in music that is devoid of meaning or some energetic, creative impulse. Likewise, there is no place where God is not. That same creative impulse which brought forth the universe in the beginning remains the *cantus firmus* (“fixed melody”) which underlies all that is, has been, or will be.

May the loving presence of that same Creator God permeate both our words and our silences as we gather to praise His name, and may we always know before whom we stand.



Seminary News

BY DEON HULL



Thanks to all of the support we receive. We could not do this without you all! We do get homesick occasionally, yet I see a lot of people on Facebook and can see the progress of the building project. Praise God from whom all blessings flow!

Classes are going well. The workload is a bit overwhelming at this time, yet I know that it is a sprint to the end of the first year. After that we get a short break and then jump into Summer Hebrew. In that short break we are planning on getting out to Dover, DE to see Steven. It will be our only opportunity before he deploys to the Middle East again. I don't know the timing of everything, but I would like to get back to Tulsa sometime this summer.

Call Day is around the corner. For those of you that are unfamiliar, on Call Day the people that are going out on their Vicarage will be finding out where they are going to be assigned for the next year. The men and women that are graduating as Pastors and Deaconesses will find out where they will be placed for their first Call. It is an anxious time for a lot of people.

In Homiletics class we had to write our first sermon. It took three weeks. They have not been graded yet, however, from everything that I have learned since that assignment it will probably be the sermon that will never be preached. Pastor Burmeister makes it look so easy. He just gets up and talks (with no notes) and out comes a sermon, right? I have a long way to go in this discipline. Yet, I know that God will give me the words to say when the time comes.

Creeds and Confessions class is rather informative. Dr. Arand knows the Book of Concord like the back of his hand. If you don't know the Book of Concord, it contains the basic information on what it means to be Lutheran. It contains many documents including one that you all might be familiar with, the Small Catechism. It also has the Large Catechism which is an expansion on the Small Catechism.

My two New Testament classes, Synoptic Gospels and Jesus and the Forces of Death are exciting and informative. We are delving into the Greek New Testament as we consider the life and message of Jesus. In the Gospels we have started to get into the text after covering the historical context in which they were written. There is a gap in time between the last prophet and the arrival of Jesus. From that time comes Herod, Pilate, and the Pharisees, as well as other religious groups. In the Forces of Death, we are looking at the miracles. What was Jesus communicating through the miracles?

Besides classes, we have been able to get out and do a few more things since they have been loosening the restrictions in St. Louis. Intermural sports have started up, so I get to play tennis once a week. It has been a long time since I played. People laughed at my wooden racket, but hey, if it was good enough for Bjorn Borg and Jimmy Connors it is good enough for me. Deb continues to work from home for the most part. Pray for William as he has arrived at his temporary duty station in Poland and will be there for about 8 more months. Please go visit Peter at Los Cobos in Jenks Riverwalk. He enjoys seeing a friendly face once in a while, and Jonathan Caspersen.

Thanks again for all of your prayers and support!

Deon & Debra Hull
14 Founders Way
St. Louis, MO 63105

Confirmation Sunday is May 2!



THOSE BEING CONFIRMED AT THE
10:45 AM SERVICE ARE LOGAN CLINE,
CAMDEN EDWARDS AND GREG SPEER.
THERE WILL BE BASKETS AVAILABLE
FOR GIFTS AND CARDS IN THE
NARTHEX



SIGN UP FOR THE E-BLAST

You can now sign up online to receive the CTR E-blast! This gives you access to the weekly news and events email as well as special announcements.

Sign up today at
<http://www.ctrtulsa.org/email-signup/>
to receive it if you have not done so already.

FOLLOW US ON SOCIAL MEDIA



Facebook:

www.facebook.com/ChristTheRedeemerLutheranChurch
www.facebook.com/groups/ctrtulsa/



Instagram:

www.instagram.com/ctrtulsa/



Youtube:

Search "Scott Burmeister" and click on the CTR logo



Twitter:

@PastorBe_CTR



Bible Quiz

Acts 1:1 (NIV) reads: "In my former book, Theophilus, I wrote about all that Jesus began to do and to teach." What "former book" did the author write to Theophilus?

- A. Matthew
- B. Mark
- C. Luke
- D. John



Answer: C (See Luke 1:1-4)



Cornerstone 5

YOUTH MINISTRY

Jr High 6th-8th Grade High School 9th-12th Grade

CONTACT DCE SUZANNE WATT TO REGISTER OR FOR MORE INFORMATION

HIGH SCHOOL
Game Night



High School Students! Join other Tulsa area LCMS youth at Immanuel-BA on Wednesday, April 28 from 5-8:30 PM! Friends invited & prizes!!

Come early from 5-6 to enjoy air hockey, pool, rumble ball pit, 9 square in the air and more! Starting at 6 we'll have dinner, devotions, games and more sponsored by Concordia University- Nebraska! Lori Johnson, an admissions rep, will also be there with info if you want to know more about CUNE. Sign up with DCE Suzanne.



"BUT YOU WILL RECEIVE POWER WHEN THE HOLY SPIRIT HAS COME UPON YOU, AND YOU WILL BE MY WITNESSES IN JERUSALEM AND IN ALL JUDEA AND SAMARIA, AND TO THE END OF THE EARTH." ACTS 1:8



CAMP REBATES NOW AVAILABLE!

Rebates are offered to individual campers who are actively participating (attending worship, Bible study &/or confirmation, youth activities, etc.) at Christ the Redeemer Lutheran Church. You may put up to 3 campers per household on one form. We will only offer a rebate for one camp session per person per season.

Remember to send your registration to Camp Lutherhoma as soon as possible. When you receive your registration confirmation attach a copy to the rebate form and return it to CTR in the Lay Ministry of Youth drawer in the Office Work Room

The amount of the rebate will depend on how many youth apply by May 1:

- it will not exceed 50% of the early registration price per individual person
 - it will reflect the total price paid after camp discounts (such as family and friend discounts) per person
 - it will be no more than \$500 per family and will be distributed on a first come, first served basis.
- Funds will be sent out after May 6. Forms submitted after May 1 will be considered with any funds that remain. The form is online and printed at the back of this newsletter.



What is the theme for the 2022 LCMS Youth Gathering?

The theme for the 2022 LCMS Youth Gathering is "In All Things" and is centered around Colossians 1:15-20.

When and Where is the 2022 LCMS Youth Gathering?

The next LCMS Youth Gathering will be July 9-13, 2022 in Houston, TX.

What Are the Age Requirements for Participants?

The LCMS Youth Gathering's primary focus is for youth participants between the ages of 14 to 19. To register for the 2022 Gathering, youth participants must meet ONE of the two following eligibility requirements:

- Must be 14 years old at the time of the Gathering
- OR
- Entering his or her ninth-grade year at the time of the Gathering.

While we do allow students from the ages of 14 to 20 to attend, please keep in mind that some of the program content may not be relevant to the youngest and older youth participants as it is geared to high school students.

When Does Gathering Registration Open?

Registration for the Gathering opens in October 2021.

How Much Does it Cost?

The Gathering registration fee is \$395 per participant. This fee covers all Gathering program and Office of National Mission Youth Ministry administrative costs and secondary insurance for all participants. Hotel, travel and meal costs are not included in the registration fee.

As in the past, CTR asks youth who want to attend to pay the registration fee, which is generally 1/3 of the total cost. The cost of travel, meals, hotel, District activities, t-shirts etc. will all be supported by fundraising and donations.

It seems unreal that the 2022 LCMS Youth Gathering is almost here!

As a youth ministry we need to begin preparing for this awesome event despite it being over a year away. Youth interested in attending should contact DCE Suzanne to let her know you would like to go. Please put the dates on your calendar NOW so you don't plan any camps or family vacations during that time in 2022. Please leave at least 2 days on each end of the Gathering for possible travel time and group activities.

We will have a meeting of all interested youth and parents on Sunday, May 23 following services. Parents interested in being a chaperone should also attend to understand what happens on the trip and expectations of that role.

Our next meeting will then be August 8, 2021 to review registration forms which will be due in September 2021 for inputting online. If you have any questions, please contact DCE Suzanne and she will be happy to answer them for you.

FAMILY & CHILDREN'S MINISTRY

Preschool- 5th Grade



CONTACT DCE SUZANNE WATT OR KATIE MICHAELS-JOHNSON FOR MORE INFORMATION OR TO VOLUNTEER.



Christ the Redeemer is again offering a Church Nursery and childcare from 8AM-12PM during worship services and Sunday School. This care for our youngest will be provided by professional, caring staff and is open to infants through age 4/5. The Nursery will be in the Church Fellowship Hall (east side) near the Sanctuary. For more information, please contact the Church Office.

SECOND DCE CALL COMMITTEE: The Call Committee for a Second DCE has begun to accumulate names for possible candidates. If you know anyone who you think would be interested or any current DCE that you would recommend, please contact John Meinders at jhmeinders@cox.net 918-625-5983 or Tim Kuehnert at tk@tulsadirectmail.com 918-906-2651. Based on the work of the DCE Exploratory Committee, we want candidates to be certified DCEs within the Lutheran Church – Missouri Synod. Also, if you would like to serve on the Call Committee, please contact John or Tim.



TACOS
&
TIE-DYE



Club 345 students (that's 3rd, 4th and 5th graders), join us on Wednesday, May 5 for a night of Tacos & Tie Dye starting at 5:30 PM at CTR. RSVP to families@ctrtulsa.org to attend or contact Melissa James with questions. Friends invited!.



summer family movie night

Families of all ages are invited to join us on Saturday, May 22 for a Summer Family Movie Night at CTR! We'll have a large movie screen, popcorn and more! Stay tuned for details on the movie we're showing and more!



Jesus commands us to be his witnesses. This craft is a reminder to reach out to all our "circles."

What you need:

- 5 bowls or cups (assorted sizes)
- Construction paper
- Pencil
- Scissors
- Brad fastener
- Crayons or markers



What you do:

1. Place the bowls and cups upside down, each on a different color of paper. Trace around the circles and cut them out.
2. With a pencil, pierce a small hole atop each circle. Layer circles on each other from largest to smallest, aligning the holes. Insert the brad through all layers.
3. Starting in the center, label the circles *my house*, *my city*, *my state*, *my country*, *the world*. Draw a picture on each one.
4. Pray, asking Jesus how you can spread his message.



Cornerstone 7

CTR CONSTRUCTION PROJECT



Congregational President Brad Young Answers Your Construction Questions



We know that many members have questions about the project and some that have developed as the project has progressed.

Here are a few answers to common questions we have heard.

What will be the completion date of Phase 1 (the East addition and classroom remodel)?

It is anticipated that phase 1 will be complete by June 30th.

When will Phase 2 begin (The renovation of the west offices and Fellowship Hall)?

Most likely, Mid-July immediately after the existing offices and fellowship hall can be vacated and moved to the new phase 1 east wing.

Where are the elevator and stairway to the second floor located?

They are located in the new phase 1 area east of the narthex.

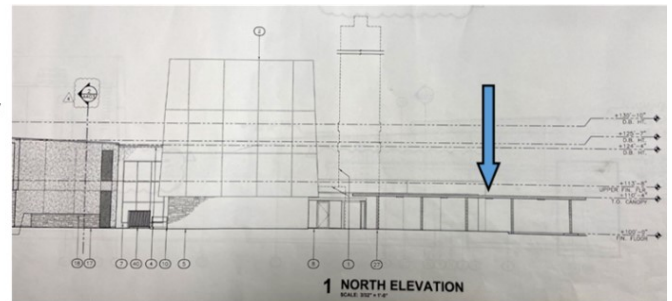
What changes will occur in the Sanctuary?

The underside area of the choir loft will be reworked with a new ceiling and lighting.

Will there be a covered entrance into the building and if so, where will it be?

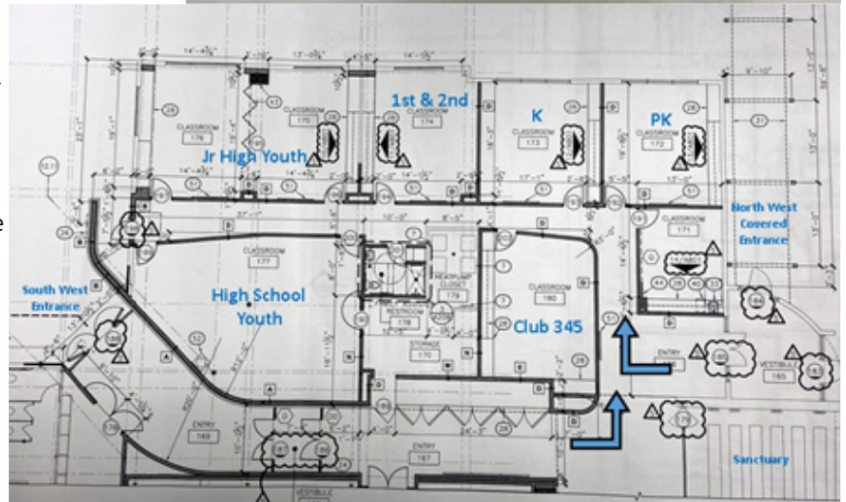
Yes, there will be a new covered walkway and drop off driveway area at the existing northwest entrance.

This drawing depicts a view of the church from 71st Street and gives you perspective on where it will be located.



Where will the Youth Room be located?

The renovations to the existing office space, main hallway and Fellowship Hall will allow for a brand new wing of Christian Education classrooms on the west side of the building. We will not have one youth room, but THREE! There will be a room dedicated to Club 345, the Jr High Youth (6th-8th grade) and High School Youth (9th-12th grade). These rooms will be open for Sunday School, CTR-U and any other youth ministry activities during the week and over summers. In addition, there will be classrooms for PreK, K, and 1st & 2nd grade for Sunday School, CTR-U and other ministry events. Access to the rooms will be through a main hallway located near to where the existing coat closet is just south of the Library. This west wing of classrooms will be the hub for children's and youth Christian Education at CTR

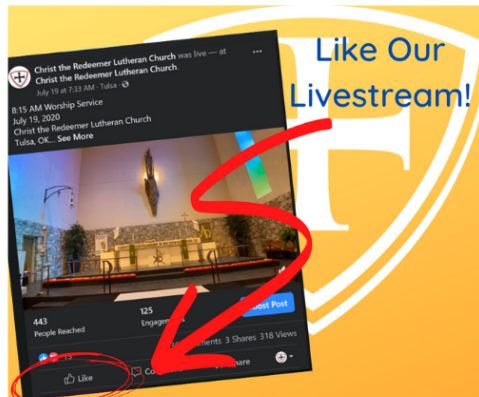


LIKE & SHARE CTR!

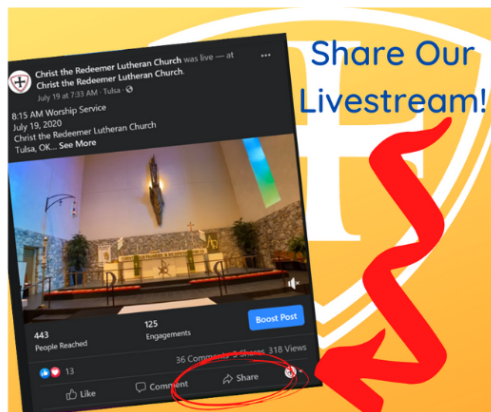


WHILE MANY CONSIDER VIEWS AND VIEWERS AS IMPORTANT, DON'T FORGET THE "LIKES" AND "SHARES."

Did you know that through the likes and shares of CTR updates and live-stream videos from congregation members who already attend our church, our content is made available in the feed of your friends and family? **Your interaction with our Facebook page is a form of evangelism**, you are sharing our church culture with people who might be open to learning more.



Facebook events are another stellar way to raise awareness of the ministry happenings at CTR. Not only can we invite everyone in the church, but **you** can invite others, too. We should be taking advantage of every tool at our disposal to reach people where they are, and there may be no greater tool available than social media. For instance you can share pictures of events or information on things going on at CTR like Sunday School and the Construction Project.



Every time a Facebook viewer like you shares our message, CTR is launched into your network of people who may not be part of our church or any church! **In essence, a share of the video is like an invitation to attend church!** This is where feeding the flock online can become outreach. **EVERYONE** with a Facebook account in the pews or watching can share! It can be done on a computer, smartphone or tablet. There are a lot of people out there right now looking for the comfort and message of hope that only Christ through His Church can bring. Let's all reach out and share the Good News of the Gospel in as many ways as we can each day!



KIDS SUNDAY SCHOOL

WE STARTED A BRAND NEW QUARTER ON APRIL 11! FOR MOST OF MAY WE ARE LOOKING AT OLD TESTAMENT STORIES ABOUT THE PROMISED LAND. CHECK OUT THE EDUCATION MINISTRY PAGE FOR MORE DETAILS. WE HOPE TO SEE YOU THERE!

Look in your mail just before the start of each month for a special packet from CTR. In it you'll find a poster to hang of the month's Bible Buddy, a sticker and information on each week's lesson that your mom and dad can review.



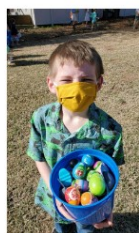
BE A TEACHER!

With more families and children returning to in-person attendance we would love to have some new Sunday School teachers! We currently have all elementary students in one class; however, we would like to divide into 2 classes: lower elementary (PK/K/1/2 and upper elementary (3rd,4th,5th). If you are interested in finding out more about being a Sunday School teacher, please contact DCE Suzanne.



EASTER SUNDAY EGG HUNT

On April 4 there was a wonderful celebration of the Resurrection of our Lord at CTR. Between services the children had a special message from pastor B and there was an egg hunt in the back yard.



CTR Camp Lutherhoma Rebate 2021

For Christ the Redeemer Lutheran Youth Attending Summer Camp at
Camp Lutherhoma, Tahlequah, Oklahoma

1. Rebates are offered to individual campers who are actively participating (*attending worship, Bible study &/or confirmation, youth activities, etc.*) at Christ the Redeemer Lutheran Church.
2. We will only offer a rebate for **one camp session per person per season.**
3. You may put up to 3 campers per household on one form.
4. Remember to send your registration to Camp Lutherhoma as soon as possible. When you receive your registration confirmation **attach a copy** to this rebate form and return it to Christ the Redeemer in the Lay Ministry of Youth drawer in the Office Work Room
5. The amount of the rebate will depend on how many youth apply by May 1:
 - it will not exceed 50% of the early registration price per individual person
 - it will reflect the total price paid after camp discounts (such as family and friend discounts) per person
 - it will be no more than \$500 per family and will be distributed on a first come, first served basis.
6. Funds will be sent out **after May 6**. Forms submitted after May 1 will be considered with any funds that remain.

If you have any other questions please contact the Director of Christian Education, Suzanne Watt by phone 492-6451 or email suzanne.watt@ctrtulsa.org. Enjoy Camp!

Name of Camper 1:
Camp Dates Registered For:
Amount Paid to Camp Lutherhoma:
\$

Name of Camper 2:
Camp Dates Registered For:
Amount Paid to Camp Lutherhoma:
\$

Name of Camper 3:
Camp Dates Registered For:
Amount Paid to Camp Lutherhoma:
\$

Name and Address to whom Rebate is to be sent:

Total Amount Paid to Camp: \$ _____

Rebate Submission Date: _____

Parent Signature: _____

Please be sure to **attach a copy** of the registration form you receive from Camp Lutherhoma. It should show a **\$0 balance due**.

Mail the completed application to the church or place in the Lay Ministry of Youth drawer in the Office Work Room:

Christ the Redeemer Lutheran Church
Attention: Camp Rebate
2550 E. 71st St.
Tulsa, OK 74136

Office Use Below:	
Reviewed by DCE:	Date:
Approved by Youth Chair:	Date:
Amount of Funds Granted:	Line Item #1132

STEWARDSHIP & GIVING

For the Month of March	2020	2021
March Giving.....	\$67,096	\$64,585
Monthly Budget	\$65,431	\$66,065
Year to Date Giving	\$837,386	\$239,556
Year to Date Budget	\$850,599	\$198,194
YTD Expenses.....	\$822,075	\$171,754
Building Fund Contribution:		
March Receipts:	\$46,816.45	
Balance:	\$2,335,258.34	

Three WAYS TO GIVE AT CTR

Questions about E-Giving? Stop by the Church Office and speak to Deva Beebe or email her at dbeebe@ctrtulsa.org to learn more.

Online Giving



You can visit www.ctrtulsa.org/on-line-giving to sign up through Vanco for one time or ongoing offering or donations. This allows you to set up weekly, bi-weekly or monthly offering. Setting up an account is easy, all you need is an email address to get started. You choose your own login information. When you create an account, you can also securely and conveniently store debit/credit card or bank account information, manage donations and review your giving history.

Mobile Giving



For our smartphone users, you can contribute through GivePlus Church, our mobile giving app. It's a convenient solution whenever you have a smart phone. You can give anytime, anywhere, any day. Go to the App Store or Google Play and search for "GivePlus Church" to quickly find the app and download it for free. You can easily make donations anytime, or create an account to schedule recurring weekly or monthly offerings. When you create an account, you can also securely and conveniently store debit/credit card or bank account information, manage donations and review your giving history. You choose how you prefer to login- Touch ID/Fingerprint, PIN or password.

Drop Off In-Person



Visit our church office during the week or use the offering basket during worship services.

STUDENT LOAN REPAYMENT FUND



Pursuing a career in service to the Lord through the church is a fulfilling opportunity, but it is not an inexpensive choice. Those who pursue professional church work many times incur educational debt, just like anyone else may do. Repayment of educational debt is often made more difficult by the more modest salaries of church workers, compared to other professions.

In order to encourage and retain our professional church workers here at Christ the Redeemer, several years ago the congregation established a fund to assist our Pastors, DCEs and other synodically-trained church workers in repaying their student loans. This fund relies on the donations of our members here at CTR. The fund is currently in need of additional funds. Please prayerfully consider a designated donation to this cause. You may place your gift in the weekly offering with a designation of "Student Loan Fund" or you may give your gift directly to one of the Elders, and we will ensure that it is deposited in the correct fund.

Thank you for your past generosity and for ongoing support.

– Jim Holt, Elder Chair



Congregational Meeting

Sunday, May 16
12:00 p.m.



EDUCATION MINISTRY

SUNDAY SCHOOL CLASSES FOR CHILDREN, YOUTH, AND ADULTS
CONTACT DCE SUZANNE WATT FOR MORE INFORMATION OR TO VOLUNTEER TO TEACH

PRE3-5TH GRADE KIDS



Your favorite VBS Bible Buddies and music are BACK as part of the "Simply Loved" Sunday school series. Join us each Sunday for music, videos, skits, games, activities and more as we learn about Israel's Wanderings and Wonderings in Exodus and talk about Jesus! All kids in preschool 3 through 5th grade are invited to attend! In this month's unit we'll focus in on how God guides us!

April 25 God's People Worship a Golden Calf

May 2 God Tells His People How to Build a Tabernacle

Our second unit is the Promised Land and the focus is how God helps us to be brave. Our lessons will come from the books of Numbers and Joshua.

May 9 Caleb Trusts God Will Help

May 16 Rahab Helps the Israelite Spies

May 23 The Israelites Cross the Jordan River

May 30 Joshua Leads God's People

6TH-8TH GRADE YOUTH



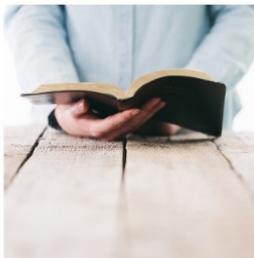
The Sunday school class, a 30-Lesson Bible Overview is also open to non-confirmation students. If necessary, we will continue to Zoom Sunday school classes for the participation of those staying at home. We are currently looking at the New Testament epistles. Classes are led by DCE Suzanne in the CTR Library.

HIGH SCHOOL YOUTH



Led by David Ross and Tim Kuehnert in the church office. This class, titled Vantage, looks at a wide variety of topics. A change in perspective changes everything. In the same way that a microscope reveals the tiniest moving parts and a mountain view makes skyscrapers fade, God's grace transforms the way we see and understand our world forever. Vantage is a yearlong curriculum that shows how God's grace changes the way that we see ourselves and our world. Students will examine the issues that confuse and divide our world by digging into what God has already said through his Word. From his vantage point, they will see that God isn't just here to tell us what we can or can't do, he's seeking to redeem the world.

ADULT CLASS




Adult Sunday School is led by Pastor B in the Sanctuary. This month's topic is Popular Biblical Narratives. Join us as we take a deeper dive into the familiar narratives and people of the Scriptures.

As we transition into the East addition this summer, look for that addition of more adult education classes!



May 2021

Sunday	Monday	Tuesday	Wednesday	Thursday	Friday	Saturday
						1
						Prov. 11:16-31 Ps 112 Heb. 12:18-29
2	3	4	5	6	7	8
Prov. 12 Ps 113 Heb. 13:1-16	Prov. 13 Ps 114 Heb. 13:17-24	Prov. 14 Ps 115 James 1:1-18	Prov. 15 Ps 116 James 1:19-27	Prov. 16 Ps 117 James 2:1-13	Prov. 17 Ps 118 James 2:14-26	Prov. 18 Ps 119:1-8 James 3:1-18
9	10	11	12	13	14	15
Prov. 19 Ps 119:9-16 James 4:1-13	Prov. 20 Ps 119:17-24 James 5:1-19	Prov. 21 Ps 119:25-32 1 Peter 1:1-12	Prov. 22 Ps 119:33-40 1 Peter 1:13-25	Acts 1:1-11; Ps 47 Eph. 1:15-23 Luke 24:44-53	Prov. 23 Ps 119:41-48 1 Peter 2:1-12	Prov. 24:1-22 Ps 119:49-56 1 Peter 2:13-25
16	17	18	19	20	21	22
Prov. 24:23-34 Ps 119:57-64 1 Peter 3:1-7	Prov. 25 Ps 119:65-72 1 Peter 3:8-22	Prov. 26 Ps 119:73-80 1 Peter 4:1-19	Prov. 27 Ps 119:81-88 1 Peter 5:1-14	Prov. 28 Ps 119:89-96 2 Peter 1:1-15	Prov. 29 Ps 119:97-104 2 Peter 1:16-21	Prov. 30 Ps 119:105-112 2 Peter 2:1-10
23	24	25	26	27	28	29
Gen. 11:1-9; Ps 143 Acts 2:1-21 John 14:23-31	Prov. 31 Ps 119:113-120 2 Peter 2:10-22	1 Kings 1:1-31 Ps 119:121-128 2 Peter 3:1-13	1 Kings 1:32-53 Ps 119:129-136 2 Peter 3:14-18	1 Kings 2:1-25 Ps 119:137-144 1 John 1:1-10	1 Kings 2:26-46 Ps 119:145-152 1 John 2:1-14	1 Kings 3 Ps 119:153-160 1 John 2:15-27
30	31					
1 Kings 4 Ps 119:161-168 1 John 2:28-3:10	1 Kings 5 Ps 119:169-176 1 John 3:11-24					

I love my church family!

During a conversation over coffee, a friend mentioned an "EGR." I had to interrupt and ask for a definition: Extra Grace Required — in other words, people who can seem tough to love. Often, they're the most in *need* of love because they're hurting. Perhaps Jesus was referring to EGRs when he said, "If you love only those who love you, what reward is there for that? Even corrupt tax collectors do that much" (Matthew 5:46, NLT).

Truly loving others — even EGRs — might not be as tough as we think. Simple gestures such as smiling, truly listening, sending a note or extending an invitation go a long way toward expressing care and softening hearts.

At times, we all require extra grace. Thankfully, God has an unlimited amount to extend *to* us and then *through* us. Out of joy, we can find ways — even simple ones — to share God's grace and love with people who need it.

—Janna Firestone



We continue to meet the third Sunday of the month in the fellowship hall at 1:00. At our April meeting we will put together mission bracelets.

During March, we collected eye glasses for MOST ministries.

Connecting Hearts and Hands Spring Fling 2021 was April 10 at Grace Lutheran. A few of us attended this gathering. It was a very good Bible Study on Connecting Hearts and Hands. I'm hoping to share this Bible Study with our Society in the near future. Pastor Tiews also talked to us about his upcoming location to Germany as a pastor there.

Remember to feed your Mite Box. The first Sunday of the month is still Mite Box Sunday. If you can't make it to church, you can mail a check to church for LWML with Mites in the memo line.

Even through the Pandemic of COVID-19, the mission work of the LWML continues. Please continue to support the many missions of LWML with your prayers and offerings.



LWML.ORG has lots of ways to support and learn more about mission grants. For the Oklahoma district go to www.lwml.org/oklahoma-district. There are also Bible Studies, devotions, and Lutheran Women's Quarterly.

Make sure you also check out LWML page on the CTR web site. I try to keep it updated also.

Thank you for your support.

Yours in Service — Daphnee Brian,
President



What brings warmth and shelter to families by becoming a bed, room divider, backpack, and at times even a home???

HOW CAN YOU HELP??

We need help in purchasing the fabric to make the quilt tops. Each quilt costs approximately \$25 to make. Donations marked "LWML quilts" can be dropped in the mite box or put in the offering plate.

Prayers for our quilt program are needed plus prayers for the recipients of our quilts. These quilts are sent all over the United States, as well as the world!





FOR THE MONTH OF MAY
LWML IS SEEKING DONATIONS FOR

Assurance Life Ministry

Please bring new or gently used items for the Assurance Ministry's REACH boutique. All donations will be brought by the CTR LWML to the 2021 LWML Convention in Lexington, Kentucky.







CHRIST THE REDEEMER

LUTHERAN CHURCH

2550 East 71st Street
Tulsa, OK 74136

NON PROFIT ORG.
U.S. POSTAGE
PAID
TULSA, OKLA.
PERMIT NO. 176

ADDRESS SERVICE REQUESTED

Help us eliminate expensive postal fees by notifying us of your change of address.

Mailing
Address
Goes
Here



"Forgiveness does not change the past, but it does enlarge the future."

—Paul Boese

