

Oklahoma LWML "MOST" Mission Trip

By Sharon Schmidt

The Oklahoma LWML Mission team went to Lake Amatitlan, Guatemala for an eyeglass clinic in March of 2018. The team was helped through the generous donation that you put in your mite box every day. We went first, to support the mission of the Lutheran Church of Castillo Fuentes and their mission start in Lake Amatitlan; secondly, to provide an eyeglass clinic where the glasses, and the Gospel is presented to every one attending by the local church; and thirdly, to provide an opportunity for women of the LWML Oklahoma District to experience a mission trip that would impact their faith life. We gave out approximately 653 glasses to men, women and children. One recipient was a man with a family of 2 children. His income was \$7.00/day. For him to get a basic pair of reading glasses, his exam would have cost \$40.00 and glasses \$110-\$140. That day he received a pair of glasses and even more important heard the Gospel message of Jesus Christ.

A lot of people were blessed with receiving glasses and also made a connection with the Lutheran church and our Lord and Savior Jesus Christ. We were also blessed by the gratitude the people of Guatemala shared with us. This is an experience that all of our team members will cherish for many years. The team consisted of Patti Ross, Lori Steele, Ruth Kruse, Kathy Quinn, Dianna Just and Sharon Schmidt. We pray that during the next biennium you might consider going on a mission trip. It is truly a blessing for the giver and the receiver.



Z
O
N
I
N
G
I
N

Around the Zone

King of Kings, Glenpool

Our society name is *Servants of the King*. We meet on the 3rd Saturday of the month at 9:00 AM.

- + We hosted the 2017 Fall Fest.
- + We have Mite Box Sunday on the 2nd Sunday of the month. On this Sunday we take one of the grant recipients and tell the congregation what the grant is used for.
- + Krystine Gibson was our delegate to the Oklahoma District Convention. We used a Thrivent Action Team to collect diapers and baby wipes for Krystine to take to Convention.
- + We take care of setting up the Altar. We had special set up for Good Friday, Palm Sunday, and Easter Sunday.
- + We have started a “Ladies Bunco Night” that meets the last Monday of the month. Once every quarter a service project will be done in place of playing Bunco.
- + We used a Thrivent Action Team to purchase backpacks and another Thrivent Action Team to purchase the items needed to fill the backpacks that we will bring to the Fall Fest. We were able to make up 120 School Kits and had extra supplies that we donated to Mercy Mission.
- + We usually have LWML Sunday in October or November. The ladies hand out the bulletins, take up the collection and do the readings.
- + We will put on our annual Live Nativity in December.

Right now, our group has four ladies. We are looking to add three to four more very soon.

Vicki Wing, President

Immanuel, Broken Arrow

Number of Members: 15-20

Meeting Day & Time: Quarterly—Usually Sunday

- + Mail cards to congregational members (after surgery, loss due to death, illness, encouragement, etc.)
- + Place Mite Boxes in congregation pew - Quarterly
- + Yearly Bake Sale at Holiday Craft Fair in early November. This is our fund raiser for our local mission support area. (Meals on Wheels, B.A. Neighbors, Day Spring Villa, Camp Lutherhoma, Immanuel Lutheran Christian Academy, Oaks Indian Mission, etc.)
- + Serve funeral luncheons as needed.
- + Provide ‘readers’ of O.T. & Epistle lessons as part of the congregational service on LWML Sunday. Serve muffins on LWML Sunday. *(Continued on page 3.)*

Immanuel, Broken Arrow

(Continued from page 2.)

Special Projects:

- January Cancer Survivor/Home Bound Kits
Collected, assembled & delivered to individuals in B.A.
- June Personal Care Kits collected for LWR
- September Personal Care Kits assembled for distribution to LWR

Other News:

Had a Bible Trivia game at one meeting & played bunco as fellowship part of another meeting.

Submitted by Diane Alden

Trinity, Broken Arrow



We had a spring tea. (**Tea from around the World**) and short meeting on spring and summer projects.



+ PROJECT 1: Our fall projects included a **scarf making day** for the homeless. We put a hat & gloves in a scarf that have a pocket sewn on each one. We take them to **John 3:16** for the months of November

and December.

- + PROJECT 2: We put together **homeless socks bags**, that have two pair of socks, 4/Band-Aids, antiseptic cream, and bar soap.
- + PROJECT 3: We put together **greeting card bags**, which include a birthday, anniversary, Easter, Christmas and get well to use as a way to get to know our Christian sisters better within our congregation.
- + PROJECT 4: We also put together **women's feminine products bags**, which include feminine wipes, tampons, maxi pads hand lotion, body wash, soap, toothbrush and toothpaste, to pass out at homeless shelter.
- + Lorie, Marlene and Lisa attended the LWML Oklahoma District Convention in Lawton.

Submitted by Marlene Highfill, Trinity LWML President

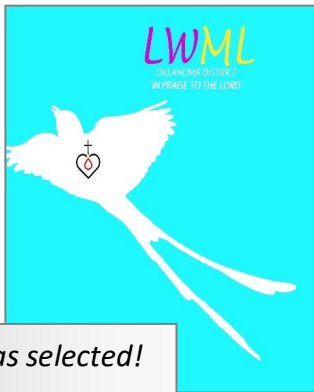


Around the Zone

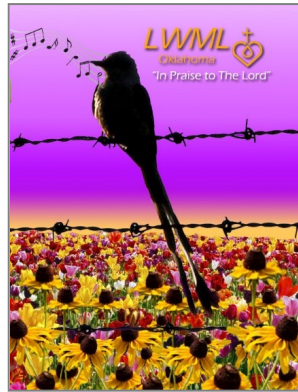
Our Savior, Tulsa

In Praise to Our Savior!

- + We have been able to accomplish the Lord's work with our LWML missions and projects with the support and dedication we have from our growing attendance by changing our meetings from Monday night to the third Sunday morning of each month. We are looking forward to our fundraiser ideas this year: a bake sale, quilt raffle, and pastry sale. All proceeds go towards offsetting costs to attend conventions.
- + We have come up with some creative ideas to advertise fundraisers, meetings, and ongoing events. Our LWML bulletin boards are big, colorful, and announce two months of information.
- + I challenged the LWML women to participate in a contest for the National Convention banner. The selected banner would get \$25 if the banner was selected. We submitted three banner ideas.



This one was selected!



- + In the past year, we were able to assist two Hispanic families during Christmas and raised over \$500. In return one of the families blessed us with tamales and many hugs and thank you notes from the kids. What an awesome feeling. We were also able to assist a grandmother and her grandson. She needed some assistance with school supplies and school uniforms. What a great blessing.
- + The Sow-Sew ladies of Our Savior Lutheran's LWML made and delivered another nine backpacks for the children in the reading program at the Day Spring Villa, a shelter for abused women and their children. The children may pick out books to read and carry them in their backpacks.
- + We are very excited and planning, as we speak, a "Cinco de Mayo" celebration. Two years ago we had a mother-daughter-grandmother tea party and had over 60 attend. This year we are celebrating "Cinco de Mayo" on May 5th and we are involving our hermanas (sisters) from our Hispanic church congregation. Our theme, "Cinco de Mayo" allows for so many festive ideas.

Submitted by Belinda Kastelic, President, Our Savior Lutheran Tulsa LWML

Christ the Redeemer, Tulsa

Have you ever noticed how many different months LWML groups use to start their year, usually depending on when they hold elections? National, District, Zone and our society are all different. When asked to summarize our past year my inclination was to start in January. However, since this is just August that means I would miss a busy 4 months at CTR!

We usually had **business meetings quarterly** and tried to participate in monthly activities. We have a group of 7-10 women who quilt every week.

- + SEPTEMBER - **Fall Fest, Mission Sunday** when we displayed all the quilts, workday to pack quilts
- + OCTOBER - **Loaded truck with Zone LWR items and took to Wichita**; Sponsored a **bake sale**
- + NOVEMBER - We tried a new venture with the 3rd, 4th and 5th graders, teaching them a little about Missions and the LWML. They created blocks and later tied the resulting **quilt, packed school kits and personal care kits.**
- + DECEMBER - Hosted a catered (Yes, ladies, that's one church meal each year none of us have to cook!) **Christmas dinner** for all the women of CTR; Hosted an **Advent meal**
- + January - Prepared/served breakfast for the **Roustabouts**, men's group that does lots of odd jobs around the church; Dressed kids for **School Bell.**
- + FEBRUARY - At Winter VBS kids again tied quilts and helped make **witness bracelets** for **MOST Ministries.** We had a **Thrivent workday** to pack **fabric and personal care kits.**
- + MARCH/APRIL/MAY - Hosted a **Lenten meal**; 8 members attended **District Convention**; **Quilting, soap** and other collections continue for **LWR**
- + JUNE - Helped with **VBS**
- + JULY/AUGUST - Thrivent workdays for **Fabric, Personal Care and School kits.**
- + We **exceeded** our Mite goal of \$2600! The congregation is encouraged to help us reach it by having a **Mite Sunday** the first Sunday of each month and a special door offering on **Mission Sunday.** We use **Thrivent Action Dollars** whenever possible and have bake sales and serve Advent and Lenten meals to raise funds for both Mites and LWR projects.



Rebekah Circle, Christ the Redeemer
Carol Fruehling, Outgoing President



2018 LWR DROP OFF SITE

Christ the Redeemer

Monday, October 8

9:00 AM-12:00 NOON

Contributions from your societies are needed to buy gas and pay tolls for the road trip to Wichita. If your society can help with this fund, please make a check out to LWML and give to CTR. Thrivent gives monies to pay for most of truck rental but gas and toll roads are not covered.

What is a YWR?

- + She is a young woman 18-35 years of age, a member of LCMS, and has not attended a National Convention as a YWR.
- + She has enthusiasm for the organization and a commitment to encourage other young women of the LWML.
- + She has the willingness to commit to the position for two years and is willing to travel to

conventions and Board of Director meetings.



Scan this QR Code for the
**YOUNG WOMAN
REPRESENTATIVE
APPLICATION** or go to
[www.oklwml.org/
young_women.htm](http://www.oklwml.org/young_women.htm)

2018 Zone Officer Candidates' Biographies

- + **PRESIDENT – Lori Steele.** Married to J. Scot Steele. Member of Trinity Lutheran Church, Broken Arrow. Member of Sanctuary Choir. Served as LWML Society President and Vice President. Served as Vice President and President of Oklahoma City Zone. Served as LWML Vice President of Gospel Outreach at Oklahoma District level. Member of OKLAHOMA LWML Mission team to Guatemala with MOST Ministries 2018.
- + **VICE PRESIDENT – Claudette Brown.** Married to Ray for over 56 years. Two grown children, one grandchild. Retired Registered Nurse. Employed by Union Public Schools for 34 years as a School Nurse. Lifelong member of Our Savior Lutheran – Tulsa. Has taught Sunday School and VBS over 50 years. Served on Board of Christian Education, Stewardship Board, Social Ministry Board, Endowment Fund Committee, Personnel Committee, Thrivent Congregation Advocate committee. Is an active Altar Guild Member, Peace by Piece Quilter & LWML, currently serving as secretary. Has served as Tulsa Zone LWML secretary and Public Relations. She and Ray coordinate the Lutheran Braille Workers Center #73 at Our Savior Tulsa. Other interests/ activities include Music (piano), serving as treasurer of Tulsa History & Music Club. Volunteers with Meals on Wheels, Komen Race for the Cure and Special Olympics. Enjoys crafts, needlework, quilting, reading, classic autos and motorcycle riding.
- + **SECRETARY/TREASURER – Judy Hixon.** Married to Frank for nearly 51 years. Three children, 2 sons, 1 daughter, 8 grandchildren, 1 great granddaughter. Currently office manager of a rural water department in Sallisaw. Has attended Trinity in Sallisaw for 15 years, serving as congregation secretary for 2 years and presently as financial secretary. Presently serving as LWML secretary. Enjoys gardening, reading and spending time with family.
- + **DISTRICT NOMINATING COMMITTEE REPRESENTATIVE FOR TULSA ZONE – Gloria Buehring.** Married 50 years to Hilbert (Tex). Two daughters, 6 grandchildren, one step-great granddaughter. Served as field director, training director, program director and Chief Operating Officer of Girl Scouts of Eastern Oklahoma (retired after 29 years). Member of Good Shepherd 44 years, serving on various boards and committees, currently Family Ministry Team and Council Secretary: directed VBS & Sunday School; sang in choir, served as LWML society president, on District Convention committee in 2016, currently Tulsa Zone PR. Favorite activities: Sing, scrapbook, Bible Study, have fun with friends and family.

Lutheran Women in Mission

Lutheran Braille Workers



Lutheran Braille Workers just celebrated 75 years of "Helping Others Touch the Promises of Jesus". Dedicated volunteers in work centers across the country produce books of the Bible and other Christian material in Braille and large print in several different languages. These are shipped all over the world to individuals, schools and Churches.

Work Center #73, housed at Our Savior Tulsa was the only center in Oklahoma for over 40 years. Five area congregations provide enthusiastic volunteers once each month to print, assemble and prepare the literature for mailing. The five are Bartlesville Redeemer, Claremore Redeemer, Broken Arrow Immanuel, Tulsa Redeemer and Our Savior Tulsa. Production presently includes St Luke in Swahili, Hosea through Micah in Spanish and Leviticus in English. Approximately 125 books are shipped each month.

A second center, #14, housed at Holy Trinity in Edmond began production in July of 2017.

LWML Mission Grants, district and national, have consistently been voted to help support the effort with assistance with expenses.

Claudette Brown, Co - Coordinator Work Center #73

Calling All Thrivent Members

Caring. Compassionate. Generous. These three words describe you in a nutshell. Why? Because you are an active member of the LWML. You make LWR Kits and quilts. Did you know you can lead your own Thrivent Action Team? It's one of your member benefits! You and your team provide the passion to bring the idea to life. Thrivent will provide some tools to help you get started. The amount of good that results from one of these events is tremendous..

Your Thrivent Action Kit includes:

- \$250 Community Impact Card
- Promotional banner
- Thank-you cards
- Team t-shirts – yes, the super soft ones

Learn more today about how you can lead your own Thrivent Action Team.

Your only limit is your imagination!

LET'S GET STARTED! Visit www.thrivent.com and look under the What We Offer tab, and then For Members/Thrivent Action Teams.

Don't forget about Thrivent Choice

Enroll your charity choice for **Direct Choice Dollars** at thrivent.com.





OK District Celebrates 90 Years!

The **OK District Convention** held on April 13-14 in Lawton was exceptional! The venue was ideal because everything was right there in the Hilton Garden Inn, and the staff was cheerful and ready to help. The **Lawton Zone** did a nice job!

Friday night, we attended Worship Service with Communion at **St John's Lutheran Church**. I think I can call it a truly awe-inspiring experience with so many beautiful Lutheran voices filling the small church with song while we filed toward the altar for Communion. What an experience!



Tulsa Zone & friends!

Back at convention central on Saturday, there were 220 individuals in attendance, including 18 Pastors; 4 past District Presidents; 3 National Presidents; 4 young women; and 4 children!



The Bible Study was led by **Ms. Cindy Steinbeck**, and the Mission Speaker was **Rev. Dr. Brent Smith** of **Mission Central**. The Keynote Speakers were LWML Past Presidents, **Linda Reiser** and **Virginia Von Seggern**. We also heard from President of the **Oklahoma District of LCMS**, **Rev. Barrie E. Henke** and our current **LWML President, Patti Ross**.

I had my first experience as a **"teller"** at the convention. What is a teller you ask? The third definition of the word is "a person appointed to count votes". We did have a little problem matching number of votes to number of people eligible to vote at first, but it was quickly straightened out. The cool part was meeting some

new LWML sisters from across the **"grand"** state of **Oklahoma!**

Our delegates voted in new District Board members **Beverly Bahr, Peggy Elon Grunow, Rev. Martin Herzberg, Jonith Grundmann, Kasey Meyer, and Sarah Yauk**; and our **2018-2020 District Mission Grants** to the tune of \$104,600. (For a complete list, go to www.oklwml.org/grants.htm. For a list of the LWML 2017-2019 Mission Grants, go to www.lwml.org/mission-grants.)



All in all, I would encourage you to attend the next District Convention in 2020 to meet some of your fellow LWMLers in Oklahoma! And mark your calendars to attend the **LWML 38th Biennial Convention in Mobile, Alabama in 2019**. (See page 12 for details or visit www.lwml.org/2019-convention.)

Submitted by **Jody Zscheck**

"The steadfast love of the Lord never ceases; his mercies never come to an end; they are new every morning; great is your faithfulness. —Lamentations 3:23

Newly Elected District Officers



Vice President of Christian Life
Peggy Elon Grunow
Vice President of Communication
Kasey Meyer
Vice President of Gospel Outreach
Beverly Bahr
Recording Secretary
Sarah Yauk
Treasurer
Jonith Grundmann
Pastoral Counselor
Rev. Martin Herzberg

Bus to Mobile

The Oklahoma bus to the **38th Biennial LWML Convention** in Mobile, Alabama (See page 12 for details.) will have 2 pick-up places. One in Oklahoma City and one in Tulsa. It is approximately an 850-mile trip from Tulsa, which will take an estimated 14 to 15 hours. We will need one night in motel/hotel on the way to Mobile and one night coming back from convention. We will plan to leave on Wednesday, June 19 and arrive about noon on Thursday, June 20 at the convention center. Right now I am looking at staying around Brandon, Mississippi on Wednesday night, and then it would be approximately 3 ½ hours into Mobile on Thursday. On the way back, we would leave convention center approximately at noon and stay over somewhere in Arkansas before drop off in Tulsa and Oklahoma City on Monday, June 24.



Two bus companies have been contacted. Kincaid Coach Lines and Village Tours and Travels. I have received quotes from both companies. Kincaid quoted me a price of \$7,788.00 and Village quoted me a price of \$8,850.00. Village has us paying for a driver relay charge of \$1,186.00...and I'm questioning that so will need to talk to them again. (I have a specific driver in mind for Village Tours). These quotes are also on the assumption that we will need the bus to go to convention every day and take us back to our motel.

According to the District Guidelines for Charter Buses to Convention, the estimated cost per person would be based on 35 passengers, which would be \$223.00/\$230.00. I based the estimated cost per person on the average of 50 passengers which would be \$156.00/\$161.00. I would suggest we allow for other expenses and go with the price per person of \$165.00 to \$170.00. This would not include the motel room on the way down or the way back. If you wanted this included, then we may have to go with \$250.00 or more.

At District Convention, I put a sign-up sheet on a table and 18 people signed up to take the bus to Mobile! We have a good start!

The bus is the way to go!

Sharon Schmidt, Bus Chairman

LWML Office is Moving

www... OKLWML

OKLWML.org

facebook.com/OklahomaLWML

The Voice of Service

oklwml.org/news.htm

www... LWML

LWML.org

facebook.com/TheLWML

twitter.com/TheLWML

pinterest.com/theLWML

youtube.com/user/theLWML

plus.google.com/+LwmlOrg

LWML.org/store

www... OTHER RESOURCES

Thrivent Financial

www.thrivent.com

Lutheran World Relief

www.lwr.org

Orphan Grain Train

www.ogt.org

Lutheran Braille Workers

www.lbwinc.org

MOST Ministries

www.mostministries.org/

Add your society news to the next issue of Zoning In!

Contact Carol Fruehling at cfruehling@hotmail.com or

Jody Zscheck

pennsy56@gmail.com

for details.

EXCERPTS FROM BLOGS BY PATTI ROSS, www.blog.lwml.org

At our Board of Directors Strategic Planning meeting in October 2016 (elected officers and LWML district presidents), one of the major goals we adopted was to “Communicate a fresh image to LCMS pastors and church workers.”

The LWML office is moving to the Concordia Seminary St. Louis campus (CSL) this fall! After years of renting at Concordia Publishing House (CPH) 3558 S. Jefferson we are moving to CSL campus. CPH has been a super landlord for us and we thank them for that business relationship, friendship, and Gospel partnership. They will continue to warehouse our resources and products for us and take care of our order fulfillment.

This came about as a result of the Rose Parade in Pasadena, 2017. I had the honor of representing LWML riding on the Lutheran Hour Ministries Rose Parade float. I got to ride next to Rev. Dr. Dale Meyer, President of CSL. It was very much on my heart as to how we can make our pastors coming out of seminary more knowledgeable about and supportive of the mission of LWML. I asked him how we could have a bigger presence on campus and he responded, “Why don’t you move your offices to the seminary campus?” Well, I thought, why not.

Even as we have gone through the process of negotiations and building planning we have already been in contact with seminary students working in various roles on campus. They will get to know LWML as an integral part of our LCMS church with more contact. We are hoping to have some functions with the seminary wives, as well. Hopefully, when your new vicar, deaconess intern, or new pastor or deaconess from CSL arrives at your church next year or after, he or she will be better-acquainted with LWML. Being a presence on campus will put us visibly in their environment. It will allow our office staff to attend chapel, eat at the cafeteria, and visit with students and their families that come to visit them on campus. When new LWML resources become available they can be readily accessed. Although our staff is small—currently three full-time and one part-time, they represent the best of LWML. They are friendly, open, knowledgeable, hard-working, and love their Lord. They will be an asset to those on campus.



Stay in Touch with LWML

It's so easy to join any of the **LWML** email lists! Just go to www.lwml.org/stayintouch to sign up for any or all!

- + **2-Minute Tuesday**
- + **eNews**
- + **Leadership Tips**
- + **LWML General News Mailing List**
- + **Mustard Seed Devotions**
- + **ShopLWML Specials**


President Patti's Blog

Do you know President Patti has a blog? Well, she does!

You can subscribe to the blog by visiting blog.lwml.org. (On the right side bar you will see "subscribe to this blog" and a space to enter your email address. Enter your email address there and then select "subscribe." Once you subscribe to the blog, you will receive the latest posts from President Patti once every other week in your email inbox!



New LWML logo banner design by Barb Sprunger, CTR



Giving Tuesday 2018
November 27, 2018


Lutheran Women in Mission

Giving Tuesday is a day of giving, fueled by people sharing about non-profits online and on social media, on the Tuesday after Thanksgiving.

This Giving Tuesday, two anonymous donors will match up to \$20,000 for the LWML Mission Goal!



How Can You Help?

-  **PRAY** for the missions being supported!
-  **SPREAD** the word about this special matching opportunity!
-  **FOLLOW** LWML Facebook and Twitter and **SHARE** special posts on Giving Tuesday.
-  **MARK** your calendar — Tuesday, Nov. 27, 2018, then **DONATE** online to **DOUBLE** your impact!

www.lwml.org/givingtuesday

Amazon Shoppers

SMILE.AMAZON.COM



- Log on to smile.amazon.com with your amazon.com login
- Choose a charity
- I chose Lutheran Women's Missionary League St Louis and donate to Mites
- Shop as normal
- Amazon will donate a percentage of your purchase. This biennium they donated \$1059 to LWML mites. Since the program began they have donated \$37,903,623 to charities.

GoodShop

YOU SHOP YOU SAVE WE GIVE

goodshop

SHOP at thousands of stores or save your favorites for quick access.

SAVE money with the best coupons and deals delivered right to you.

WE donate a percentage of each purchase to the cause of your choice at no extra cost to you.

- Please sign up at goodshop.com or download the mobile app.
- Select a charity: I chose the LWML National Organization and donate to Mites.

This biennium LWML has received \$1520 and \$23,687 since the program began. And GoodShop has a new feature called Gumdrop. When you are shopping online, Gumdrop automatically activates coupons and lets you know how much you are donating to LWML!


by goodshop

Convention 2019

LWML 38th Biennial Convention
www.lwml.org/2019-convention



DATE: **June 20–23, 2019**

LOCATION: **Mobile, Alabama**

THEME: **"In Praise to the LORD!"**

SCRIPTURE VERSE: ***Sing to the Lord, all the earth! Tell of his salvation from day to day. Declare his glory among the nations (1 Chronicles 16:23–24a).***

PRESIDENT: **Patti Ross**

CONVENTION GOAL STATEMENT: Led by God's power, we praise and proclaim the Lord among all the nations.

CONVENTION OBJECTIVES -- Each convention attendee will:

- + Sing and rejoice in celebration of His Word.
- + Tell of His salvation for all.
- + Declare His glory among the nations.
- + Go forth in His joy!



DEADLINES

August 15, 2018 Nominations for LWML Officers and Nominating Committee

See www.lwml.org/nominations for more information.

September 30, 2018 LWML Mission Grants Proposals

See www.lwml.org/mission-grant-proposals for more information

March 1, 2019 Names of Certified 2019 LWML Convention Delegates and Alternates

POST-CONVENTION CRUISE OUT OF

MOBILE

After the 2019 LWML Convention in Mobile, Alabama, the LWML is pleased to offer a cruise on the Carnival Fantasy for FUN from **June 24 - 29, 2019**. This will be a time for well deserved rest and relaxation as well as fun and fellowship with your friends. The great fact is that you will cruise out of Mobile, the site of the LWML Convention.

Would you like to take part in this fun getaway? McGehee Cruise & Vacation Inc. will assist with all reservations for the cruise.

Registration is now open:

Please follow this secure link for further information and questions.

<https://form.jotform.com/81724876028969>

You can also find the link on the LWML website at www.lwml.org/2019-convention.

As with any cruise, it is best to book as early as possible so you can get the cabin you prefer.

